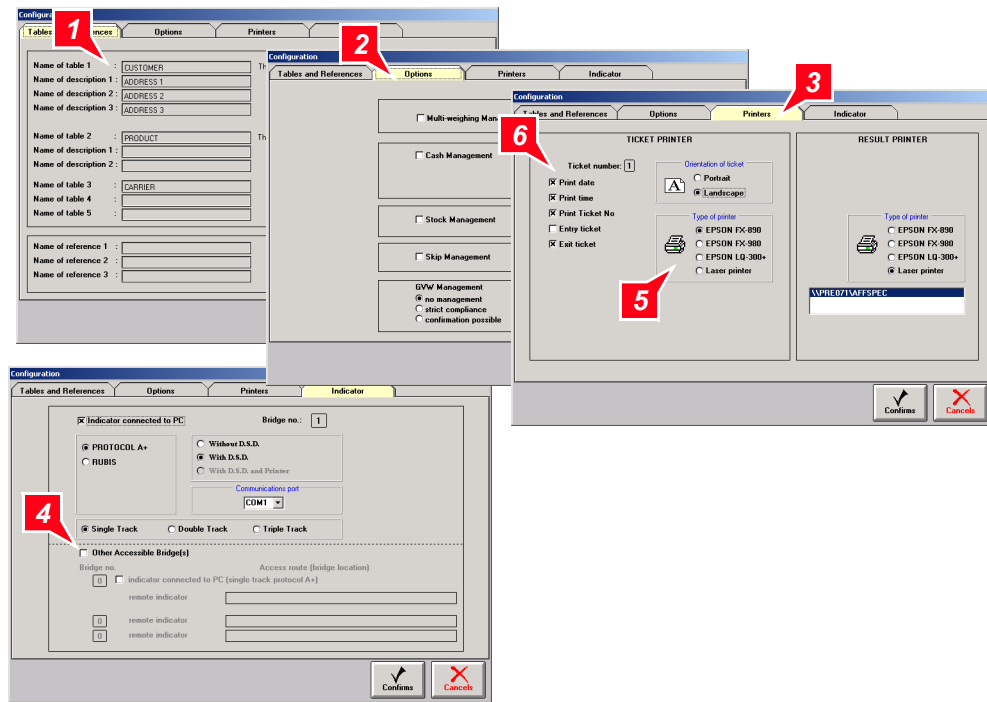




## Software functions

- Multiple company.
- Single or multi-weighbridge.
- Single or multi-station.
- Single weighing, input/outputs, loading.
- Tare files, bin tare and transit.
- From 1 to 5 configurable files possibly with recording during transaction.
- Two-level password protection.
- Direct or cross totals, with or without date interval, detailed or total.
- Summary of weighings with export to ASCII, EXCEL® files, transfer by mail.
- Possibility of pre-recording transactions.
- Configuration :
  - cash payment and till management,
  - material movements in shipment/reception and stock management,
  - printouts : by commercially available system, Business Objects Crystal Reports XI.
- Compliance with Construction Products Directive (89 106-EEC)
  - Three label fields, each 30 characters,
  - € marking option by product on the PC ticket.

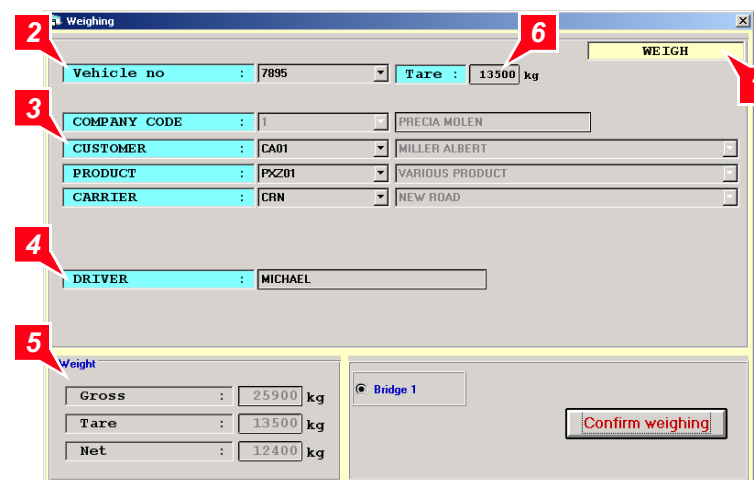
## Application settings



1. Table and reference settings.
2. Settings of possible options, including cash management, stock management, bin management, gross vehicle weight management, multi-weighing management.
3. Selection and definition of the printer used.
4. Configuration of other accessible weighbridges\*.
5. Selection and definition of the printer used.
6. Selection of printout options.

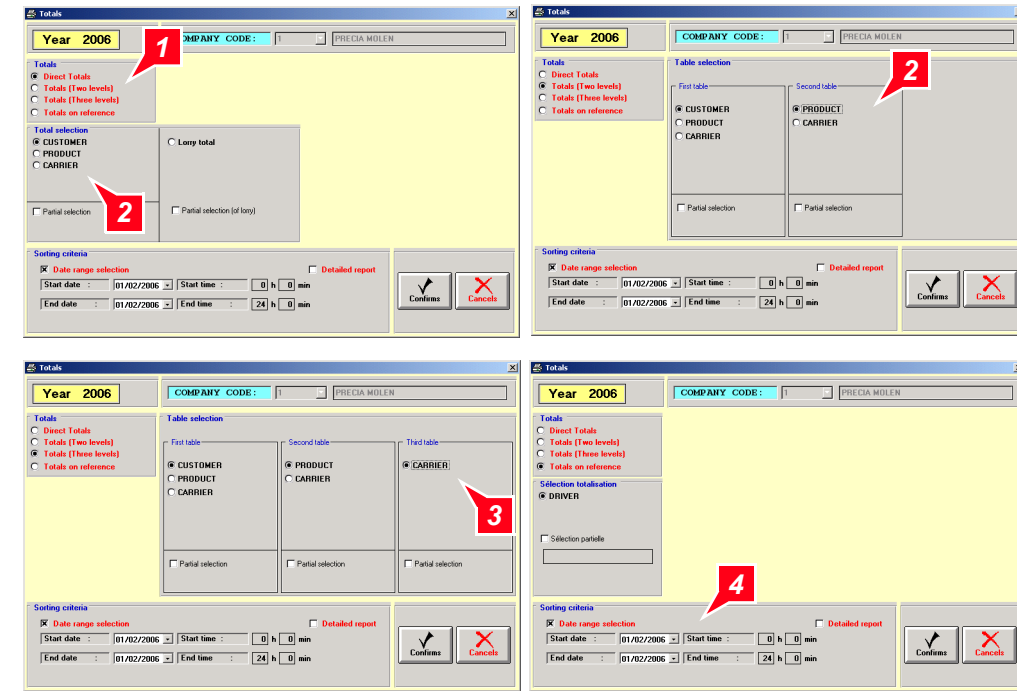
\* For microcomputers in networks and associated with other weighbridges.

## Weighing operations



1. Current function, among four available functions : weighing, manual weighing, gross weighing, loading.
2. Company code, fleet number and vehicle number.
3. From 1 to 5 management codes.
4. From 1 to 3 references.
5. Current weighing result.
6. Input and memorisation of a tare value associated with the vehicle.

## Totals



1. 4 types of totals and export of data.
2. Selection of tables for cross totals.
3. Possibility of partial selection of 1 table.
4. Possible date-to-date totals.

## File characteristics

### Configurable table 1 :

	Length	Type
• Code	10	alphan.
• Label	30	alphan.
• Address (lines 1 to 3)	40	alphan.

### Vehicle tare file :

	Length	Type
• Truck number	10	alphan.
• Tare value	6	weight
• Gross vehicle weight	6	weight

### Configurable table 2 :

	Length	Type
• Code	10	alphan.
• Label	3 x 30	alphan.
• Logo	1	alphan.
• Price	9999,99	num.
• VAT rate	99,99	num.

### Summary table (non exhaustive) :

	Length	Type
• Entry date	6	ddmmyy
• Entry time	4	hh:mm
• Ticket number	6	num.
• Truck number	10	alphan.
• Codes 1 to 5	10	alphan.
• Gross weight	6	weight
• Tare	6	weight
• Net weight	6	weight
• References 1 to 3	20	alphan.
• Weighing type	1	M/D
• DSD No	n/xxxxxx*	alphan.

\* (n : weighbridge No); (xxxxxx : DSD No on 6 digits)

### Configurable tables 3 to 5 :

	Length	Type
• Code	10	alphan.
• Label	30	alphan.

## Development language

Visual Basic 6 and Access 2003.