

Options & Accessories

Distribution platforms



Set of distribution platforms, with or without metallic ramps.

To keep civil works minor for a fast start of operation of the weighbridge.

Large cleaning hatches

- ▼ 6m module: 1 780 x 650 mm
- ▼ 7m module: 2 400 x 600 mm

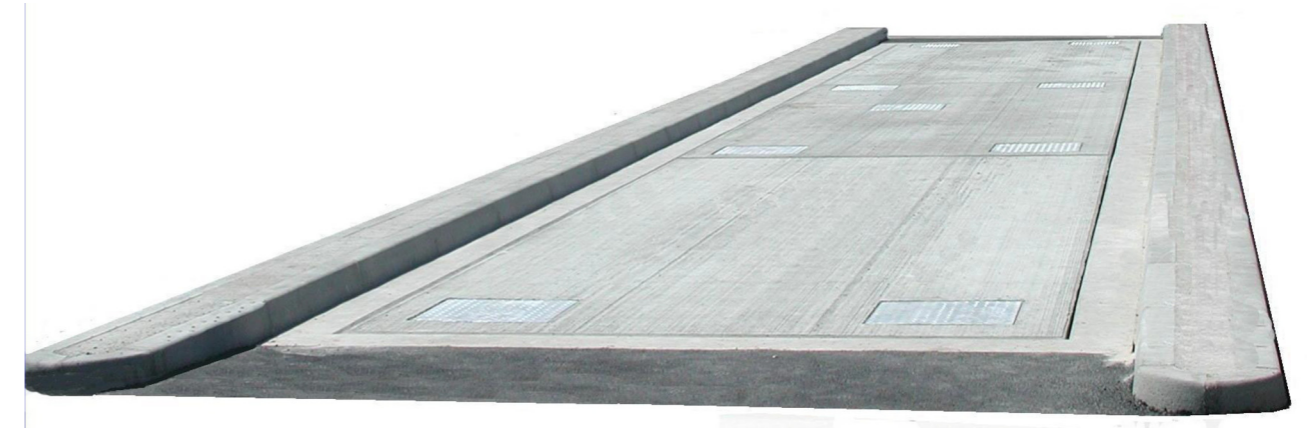
Other Options & Accessories

- ▼ T-section rubber.
To set on slab edges. Prevents the accumulation of product fragments underneath the weighbridge. Length: 3 or 10 m.
- ▼ Wheel guides.
- ▼ 70 mm riser (specific for quarries).
Available only in 14m length, above ground. Requires specific civil works.

WWW.PRECIAMOLEN.COM

ROC V4 Weighbridge

**PRECIA
MOLEN™**
WORLDWIDE WEIGHING



WWW.PRECIAMOLEN.COM

General presentation

Designed for all vehicle weighing applications, the ROC weighbridge is a concrete weighbridge meeting the dimension of your project thanks to its five standard elements.

Its modular design in factory-cast structured concrete offers many benefits:

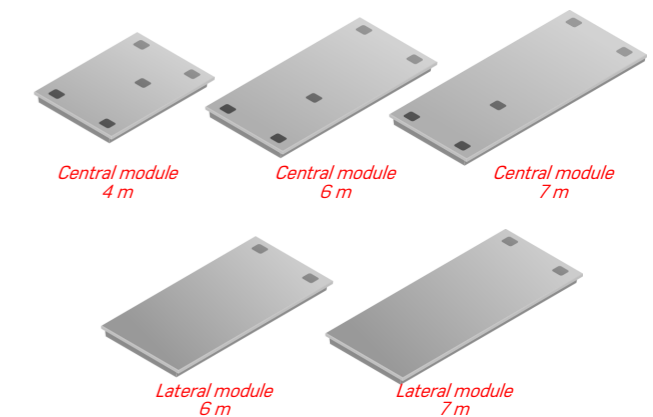
- ▼ Installation conditions: on ground or low pit with extremely simplified prior civil engineering works.
- ▼ Installation lead times:
 - all elements delivered in one single truck (≤ 18 m),
 - 24 hours, initial checking included,
 - without anchorage nor pit frame.
- ▼ Conditions of operation:
 - passage in all directions thanks to a modern design and 2 axes stops,
 - galvanised steel inspection hatches for functional devices (load cells, stops, junction box),
 - easy to relocate and reinstall.
- ▼ Long lifetime: resistance to corrosion, shocks, overloads and vibrations.

The ROC weighbridge is fitted with analog or digital compression load cells, ensuring best use of the digital chain (simplified adjustment, interchangeability, reliability).

The maximal load supported by the ROC weighbridge depends on the distribution of the load per vehicle axle. (See chart below.)

Design

The ROC weighbridge is always made of a central element with 4 bearing points (4 m, 6 m or 7 m module) and one or two lateral modules (of 6 m or 7 m) with two bearing point added at each end of this central module to obtain the length required.



Each bearing point is fitted with a load cell and its associated environment, and a lateral and/or longitudinal mechanical anti-shock stop.

Besides, each load cell is individually protected from rodents, in standard version.

European conformity

- ▼ Compliant to the definition of a typical load receptor as per the WELMEC 2.4 guide.

Your specialist

Illustrations not contractual. Precia-Molen reserves the right to alter the characteristics of the equipment described in this brochure at any time.

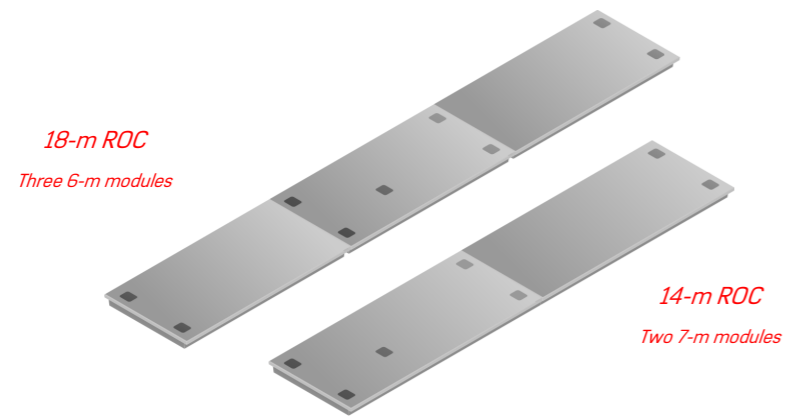
PRECIA-MOLEN Head Office & Plant
BP 106 - 07000 Privas - France
Tel. 33 (0) 475 664 600
Fax 33 (0) 475 664 330
Email webmaster@preciamolen.com

RCS: 386 620 165 RCS Aubenas

**PRECIA
MOLEN™**
WORLDWIDE WEIGHING

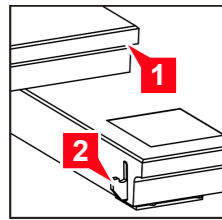
10-01-04-1-FT A - 04/2014

Examples of projects

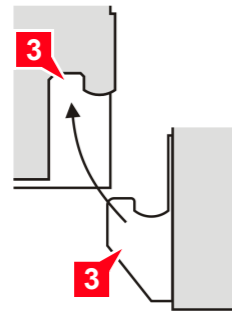


General principles

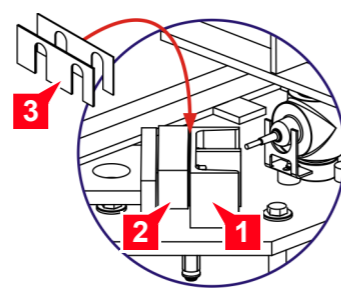
Inter-module link



1. Carried module
2. Carried module
3. Module hanging device



Detail of end stops

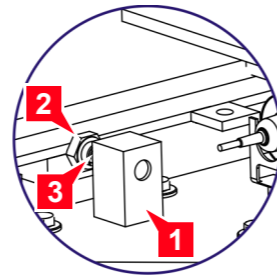


Stop with 2 axes

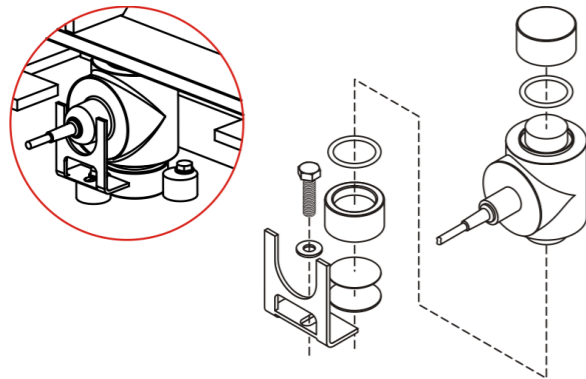
1. End stop body
2. Stop
3. Play adjustment shims

Lateral end stop

1. End stop body
2. Stop screw
3. Locknut



Installation of load cells



Installation

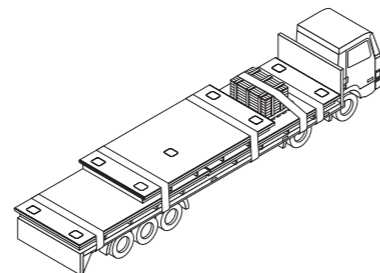
Civil works services and required materials are not provided by PRECIA MOLEN. However, PRECIA MOLEN supplies a set of civil works guide plans.

An optional set of distribution platforms helps installing the weighbridge onto reduced civil works, hence a particularly fast start of operation.

Delivery and packaging

The whole weighbridge is delivered in one single truck (≤ 18 m).

Other elements such as slabs are delivered in a wooden crate (approx. 200 kg).



Available models

Weighbridge length	Central modules			Lateral modules		Number of load cells
	4 m	6 m	7 m	6 m	7 m	
4 m	1	-	-	-	-	4
6 m	-	1	-	-	-	4
7 m	-	-	1	-	-	4
10 m	1	-	-	1	-	6
12 m	-	1	-	1	-	6
13 m	-	-	1	1	-	6
14 m	-	-	1	-	1	6
16 m	1	-	-	2	-	8
18 m	-	1	-	2	-	8
20 m	-	1	-	-	2	8
21 m	-	-	2	-	1	10
22 m	1	1	-	2	-	12
24 m	-	2	-	2	-	12

Technical features

Module	Length	Width	Height	Average weight
Central - 4 m	4 m	3 m	405 mm	6.1 t
Central - 6 m	6 m	3 m	405 mm	8.3 t
Central - 7 m	7 m	3 m	405 mm	11.3 t
Lateral - 6 m	6 m	3 m	405 mm	8.3 t
Lateral - 7 m	7 m	3 m	405 mm	11.3 t

Maximum load for axles

Distance D (mm) between N following axles (N > 1)	Maximum load (t) per axle by N axle set on a 4, 6 or 7m module				
	N = 1	N = 2	N = 3	N = 4	N > 4
900 ≤ D < 1050	16	10.5	9.0	7.5	32.0 / N
1050 ≤ D < 1200	16	11.2	9.3	7.8	34.0 / N
1200 ≤ D < 1350	16	11.9	9.5	8.2	36.0 / N
1350 ≤ D < 1500	16	12.6	10.0	8.5	37.0 / N
1500 ≤ D < 1650	16	13.3	10.3	8.8	38.0 / N
1650 ≤ D < 1800	16	13.7	10.5	9.1	39.0 / N
1800 ≤ D < 2000	16	14.0	11.0	9.5	40.0 / N