

# I 410 SYSTEM

INDUSTRIAL CONTROLLER FOR WEIGHING PROCESS



**BAGGING**



**DYNAMIC CHECK WEIGHING**



**DISCONTINUOUS WEIGHING**



**WEIGHBRIDGE MANAGEMENT**



## TERMINALS



I 410 D panel-mount

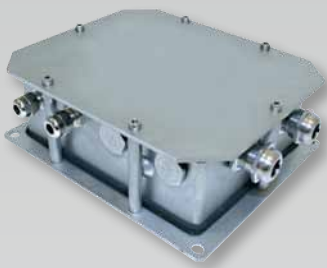


I 410 D-S Stainless steel case



I 410 T tabletop version

## TRANSMITTERS



I 400 TB with load cell junction box



I 400 TC DIN rail

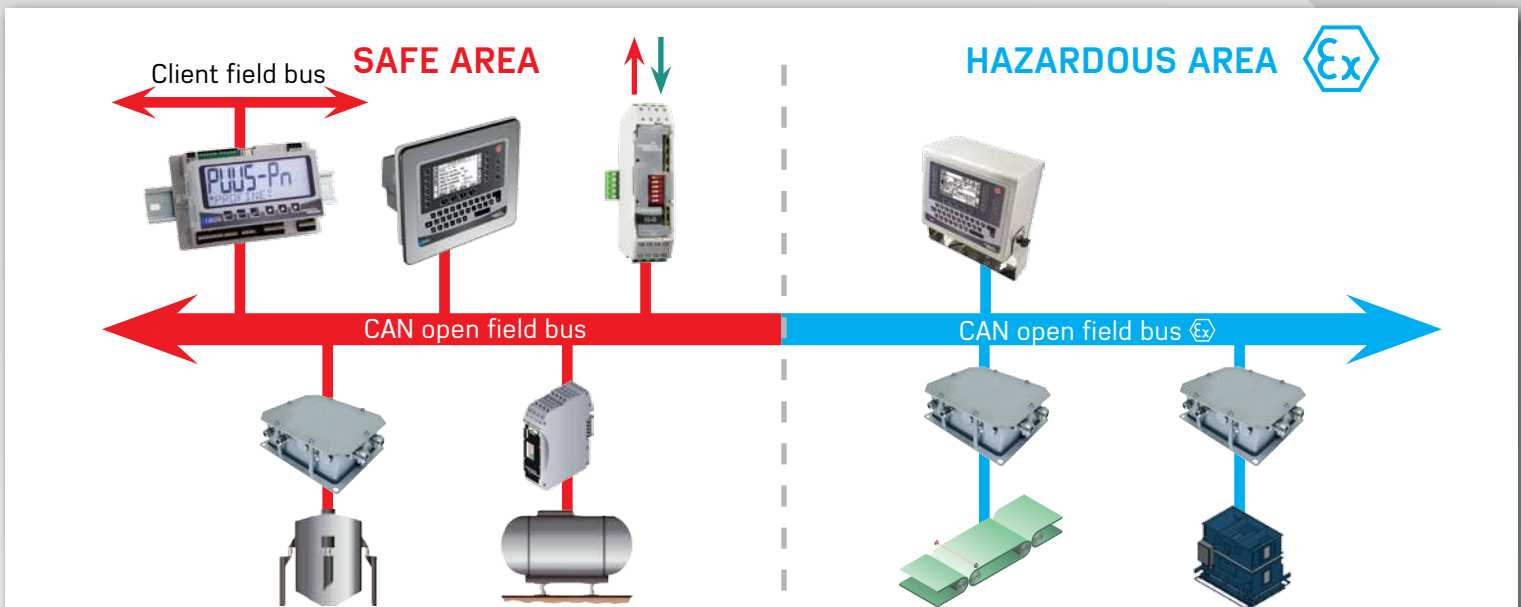


CAN OPEN I/O

## FIELD BUS COUPLERS



I 410 G DIN rail



**CONTINUOUS DOSING**



**LOSS-IN-WEIGHT DOSING**



**CONTINUOUS WEIGHING**



**DRUM FILLING AND RECIPE PREPARATION**



## CONCEPT

- ▼ **The I 410 system** provides a new solution to the issues encountered when integrating a weighing function to any industrial process.

With a modular and distributed design, the I 410 system is organized around the **CANopen** field bus, and comprises the following 3 main elements:

- a weight **TRANSMITTER** processing the signal close to the load cells for better immunity to electromagnetic disturbance. Some transmitter models even integrate the load cell junction box,
- a **GRAPHIC TERMINAL** associated with a weight transmitter per measurement channel managed (up to 31 channels),
- a **COUPLER** providing communication with the most common industrial field buses in the market: Profibus, DeviceNET, Ethernet TCP/MODBUS, Ethernet/IP and Profinet.

Additional modules:

- Local or remote digital Inputs/outputs,
- RS 232, RS422/485 and USB communication,
- Local or remote 4-20 mA or 0-10V analog inputs/outputs,
- USB flashdrive for weighing storage and traceability.

- ▼ With high metrological performance (fast conversion, multi-range and powerful filtering algorithms), meeting the most demanding industrial processes.
- ▼ All components, transmitters and terminals, can be installed directly in explosive area, without impacting performance while allowing communication with the safe area.
- ▼ Including a PLC-oriented development workshop, compatible with the IEC 1131 standard, the I 410 system allows to deploy basic or complex applications:
  - "field" applications proposed by PRECIA MOLEN,
  - data feeding into customer's information system,
  - specific development design.

## ASSETS

- A/D conversion direct from load cells.
- **CANopen** bus-based modular architecture.
- High metrological performance.
- Communication with the main existing field buses.
- Connection with client's PLC and ERP.
- Integration of standard components.
- PLC-oriented development workshop.
- All components can be installed in Ex area.



- **OUR SUBSIDIARIES**
- **OVER 40 AGENTS THROUGHOUT THE WORLD**

PRECIA MOLEN WORLDWIDE PRESENCE

**FRANCE**  
T +33 475 66 46 00  
export@preciamolen.com

**THE NETHERLANDS**  
T +31 765 24 25 21  
sales@preciamolen.nl

**UNITED KINGDOM**  
T +44 1527 590 300  
sales@preciamolen.co.uk

**IRELAND**  
T +353 18 35 30 84  
sales@preciamolen.ie

**BELGIUM**  
T +32 3 8 86 00 84  
sales@molen.be

**POLAND**  
T +48 12 411 50 50  
biuropl@preciamolen.com.pl

**CZECH REPUBLIC**  
T +420 296 554 226  
sales@preciamolen.cz

**INDIA**  
T +91 44 2681 0525  
info@preciamolen.in

**MOROCCO**  
T +212 5 22 70 69 05  
preciamolenmaroc@menara.ma

**NORWAY**  
T +47 47 47 15 47  
post@preciamolen.no

**BRAZIL**  
T +55 11 2364 3009  
vendas@preciamolen.com.br

**ROMANIA**  
T +40 216 681 384  
alin.sarbu@preciamolen.fr

**AUSTRALIA**  
T +61 2 8006 9154  
sales@preciamolen.com.au

**MALAYSIA**  
T +603 2785 6813  
aspac@preciamolen.com

**CHINE**  
T +86 574 8783 0811  
pmchina@preciamolen.com

**WEST INDIES**  
T + 33 696 34 94 29  
philippe.dumont@preciamolen.fr